

**PICANOL**  
Let's grow together

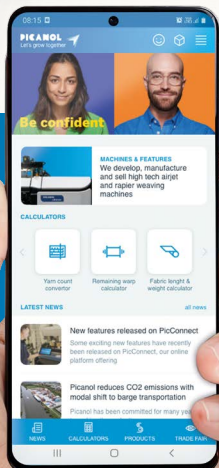


# ITMA ASIA + CITME 2024

National Exhibition and Convention Center | Shanghai | China | 14 - 18 OCTOBER 2024



**Hall 3 Booth E01**



Find out more about our products & features on our website [www.picanol.be](http://www.picanol.be)



SCAN HERE TO GO TO OUR WEBSITE

**ENGLISH**

## 1 Supermax-4-R 250 Denim

The Supermax is leading the way in digital, innovative and sustainable weaving.



**Warp:** Co Ne 13/1  
Density: 81 ends/inch  
Drawing in width: 91 inch

**Weft:** Co/EI Ne 16/1 + 70 den  
Density: 49 picks/inch

**Highlighted features:**

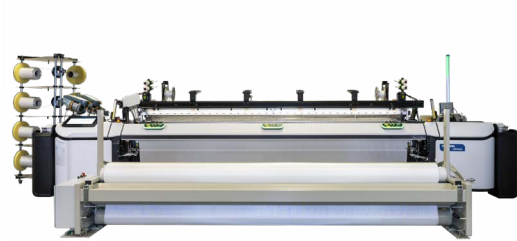
- Recycled yarn ready
- Guided Gripper (GC)
- Mechanical weft cutter
- Dobby S3018
- QuickStep weft presenter
- BlueBox electronic platform

**Standard:**

- BlueBox electronic platform
- BlueTouch display
- SUMO drive concept
- Climate monitoring
- Shed calculation
- PicConnect enabled

## 2 Ultimax-4-R 360 Coating

The ultimate weaving machine for Coating weavers, offering highest possible production speeds, top fabric quality and ease of operation.



**Warp:** Pes 990 den  
Density: 18 ends/inch  
Drawing in width: 137.8 inch

**Weft:** Pes 990 den  
Density: 18 picks/inch

**Highlighted features:**

- BlueTouch display
- Gripper stroke measurement
- on-loom Picascope
- Free Flight with raceboard (VB)
- Smart signal lights
- Laserstop

**Standard:**

- BlueBox electronic platform
- BlueTouch display
- SUMO drive concept
- Gripper stroke measurement
- Climate monitoring
- Shed calculation
- PicConnect enabled

**Monitor package:**

- Access control
- OptiStyle
- Raw material use
- AutoSens
- Gripper tape monitoring

**Optimization package:**

- Power monitoring
- Harness frame stroke measurement & Shed simulation
- on-loom Picascope

## 3 Supermax-12-J 380 Saree

The Supermax offers you the perfect solution for weaving top-quality jacquard fabrics, up to 380 cm.



**Warp:** Pes 50 den  
Density: 190 ends/inch  
Drawing in width: 151.6 inch

**Weft:** Pes 150 den  
Density: 48 picks/inch

**Highlighted features:**

- Free Flight with raceboard (VB)
- Mechanical weft cutter
- BlueTouch display
- Smart signal lights
- Climate monitoring
- SUMO drive concept

**Standard:**

- BlueBox electronic platform
- BlueTouch display
- SUMO drive concept
- Climate monitoring
- PicConnect enabled

## 4 OmniPlus-i Connect-2-P 230 Bottom weight

The proven standard for weaving Bottom weight also with recycled yarn. Designed with the focus of reaching the highest possible price performance ratio in this fabric segment. A clear demonstration of the OmniPlus-i Connect.



**Warp:** Co Ne 16/1  
Density: 90 ends/inch  
Drawing in width: 78 inch

**Weft:** Co/EI Ne 16/1 + 70 den  
Density: 44 picks/inch

**Highlighted features:**

- Adaptive Relay Valve Drive (ARVD II Plus)
- AirMaster
- Blue22 EasySet prewinders
- Pick Repair Automation (PRA II Plus)
- Power monitoring
- SUMO drive concept

**Standard:**

- BlueBox electronic platform
- BlueTouch display
- SUMO drive concept
- Climate monitoring
- Shed calculation
- PicConnect enabled

**Monitor package:**

- Access control
- OptiStyle
- Raw material use

**Smart savings package:**

- Power monitoring
- AirMaster with integrated air consumption meter
- Adaptive Relay Valve Drive (ARVD II Plus)

## 5 Supermax-12-J 380 Saree (Qihui - Hall 3 Booth B02)

**Warp:** Pes 50 den  
Density: 105 ends/inch  
Drawing in width: 143.5 inch

**Weft:** Pes 100 den + Pes 150 den + Pes 200 den  
Density: 51 picks/inch

## 6 Supermax-8-J 340 Upholstery (Jiabao - Hall 3 Booth D57)

**Warp:** Pes 75 den  
Density: 171 ends/inch  
Drawing in width: 123.3 inch

**Weft:** Pes 150 den  
Density: 173 picks/inch

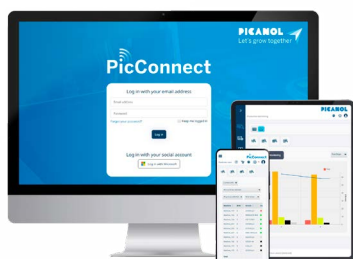
## 7 GTMax-i 3.0S-8-J 190 Shoe fabric (Tongxiang - Hall 3 Booth E07)

**Warp:** Pes 150 den  
Density: 124 ends/inch  
Drawing in width: 63 inch

**Weft:** Pes 150 den  
Density: 48 picks/inch

## PicConnect corner

PicConnect is Picanol's digital platform, offering a wide range of features, from industrial IoT to service-related applications to optimize your machines and manage your weave room.

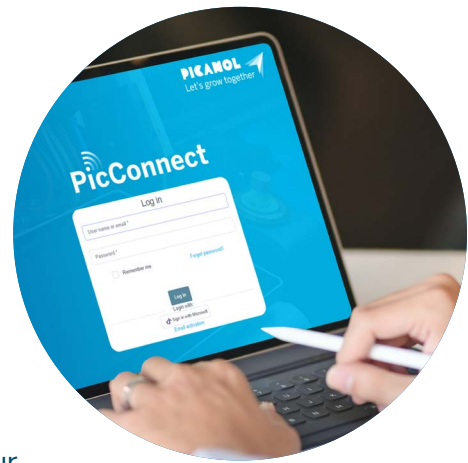


Visit the PicConnect corner of our booth to discover everything you need to know about this platform. All of the weaving machines at our booth will be connected to PicConnect.

# Welcome to the era of intuitive weaving

With **PicConnect**, Picanol is centralizing its digital tools and services in one new fully digital platform, offering a wide range of features from industrial IoT to service-related applications.

PicConnect enables you to quickly react to changes in the weaving room, and it will have an immediate impact on the performance of the weaving machines. It will not only change how you work with your machines but also the way you interact with Picanol. For this reason, Picanol can boldly state that PicConnect is bringing you into the era of intuitive weaving.



## PicConnect concept

### Web-based

PicConnect is a **web application**. The platform can be accessed from the browser of any device connected to the internet, even the BlueTouch display of our weaving machines.

### Cloud-based

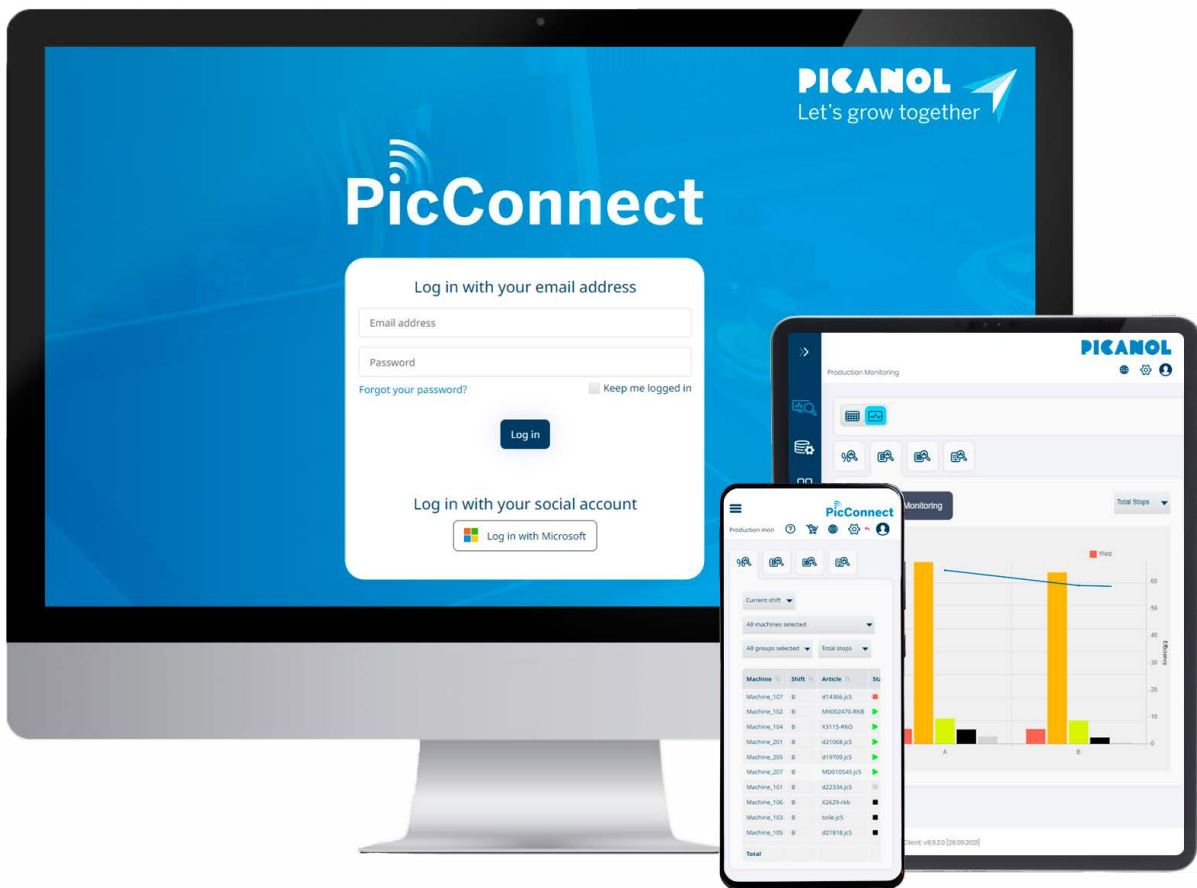
PicConnect is **cloud-based**. The latest applications and updates are automatically available in your own secure environment.

### Connectivity

To leverage the full extent of possibilities the platform offers, **machines can be connected** using an internet connection. All machines with a BlueBox platform can be connected.

To request your PicConnect environment, contact your local After Market Sales Representative.





## PicConnect packages

A free package, called **Bronze**, is available to all customers. Paid packages **Silver** and **Gold** contain applications that leverage machine connectivity.

	Bronze	Silver	Gold
PartsLine	•	•	•
Spare parts catalog (eSPC)	•	•	•
Machine manuals	•	•	•
Machine software distribution	•	•	•
Machine configuration	•	•	•
Production monitoring	-	•	•
Energy monitoring	-	•	•
Data export (API)	-	•	•
Style management	-	-	•
Pattern editor	-	-	•
Alerting	-	-	•
Preventive maintenance	-	-	•
Logbook	-	-	•

# Our design principles: how we build our machines.

Today's world is all about connectivity, user-centric design, intuitive controls, self-learning capacities, and sustainability...to name just a few. When designing a new machine, we take these ever-evolving requirements as benchmarks for all our innovations and improvements.

That's why Smart Performance, Sustainability Inside, Driven by Data, and Intuitive Control have become the basic principles of any Picanol weaving machine. Together, they enable you to follow your weaving instincts and get the best possible results on all our platforms.



## Smart Performance

Performance is the first requirement for any machine or feature. The obvious indicator for this is the theoretical maximum speed. Very often, however, the gap between this theoretical speed and the effective speed under real-life conditions is huge. That's why we design our machines around the principle of Smart Performance: **intelligent machine design** combined with self-setting software, which enables **the highest possible practical speed** and **best performance under all conditions**.



## Sustainability Inside

When it comes to preventing waste and reducing energy consumption, for many years Picanol has faced up to its responsibilities. Our machines are designed with a built-in capacity for sustainability: **energy efficiency** and **smart use of resources** are at the heart of all our platforms.



## Driven by Data

**Digitization** has become increasingly important over the last few decades and this will continue to be the case. All kinds of machine and contextual data have to be captured and made available for **artificial intelligence**, making production more efficient. Thanks to our **fully integrated sensorization** and enabled by our digital platform **PicConnect**, we are at the forefront of digitization, offering you the smartest way to manage your weaving machines.



## Intuitive Control

Children nowadays handle new technology **effortlessly and intuitively**. And that's what we want for our machines as well. Just like with your smartphone or in your car, **the interactive machine display** is the interface that controls almost all the machine functions. This **user-centric approach** is also embedded in the design of the overall machine, making all operations easy, intuitive, and self-explanatory.

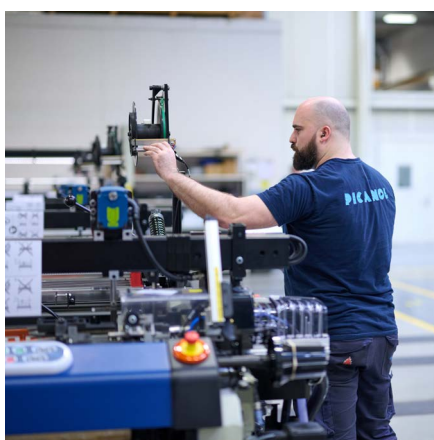
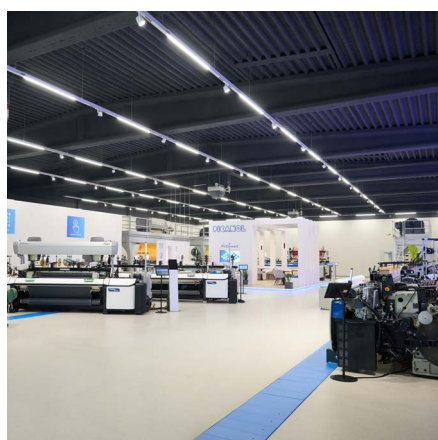
# About Picanol

**PICANOL**   
Let's grow together

For more than eighty years, Picanol has played a pioneering role in the global textile industry and it is currently the world's leading weaving machine manufacturer. Picanol develops, manufactures, and sells high-tech weaving machines based on airjet and rapier technology.

Picanol offers upgrade kits, spare parts, training, troubleshooting services, and also digital services for its weaving machines through the PicConnect platform. Picanol has its headquarters in Ieper (Belgium) and it employs more than 1,200 people worldwide. Picanol is part of Picanol Group, a business unit of Tessenderlo Group (Euronext: TESB).

[www.picanol.be](http://www.picanol.be)



The illustrations and descriptions in this publication do not commit Picanol in any way | EN 04.10.2024

**PICANOL**   
Let's grow together

Steverlyncklaan 15, 8900 Ieper, Belgium  
+32 57 222 111 - [info@picanol.be](mailto:info@picanol.be)

 ID: Picanolgroup

 /picanolmovie

   /picanolweavingmachines